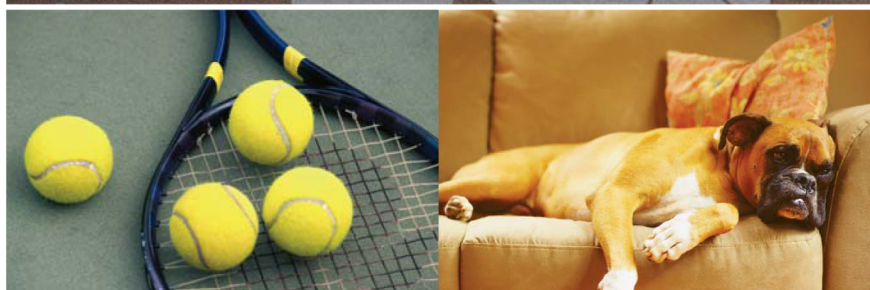


Live Here. **Be Everywhere.**



More of What You Want

36 landscaped acres including Grace Murray Hopper Park

Incredible sports club with two fitness centers, two swimming pools, six tennis courts and jogging trail

Rooftop sun decks and solariums

Picnic areas with pagodas, BBQ grills and tot lot

On-site valet and dry cleaning

Entertainment room

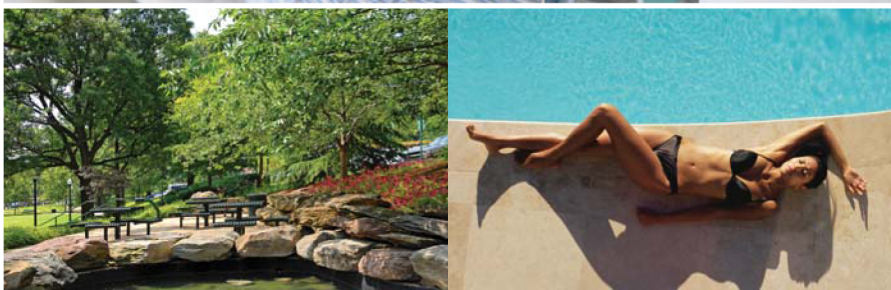
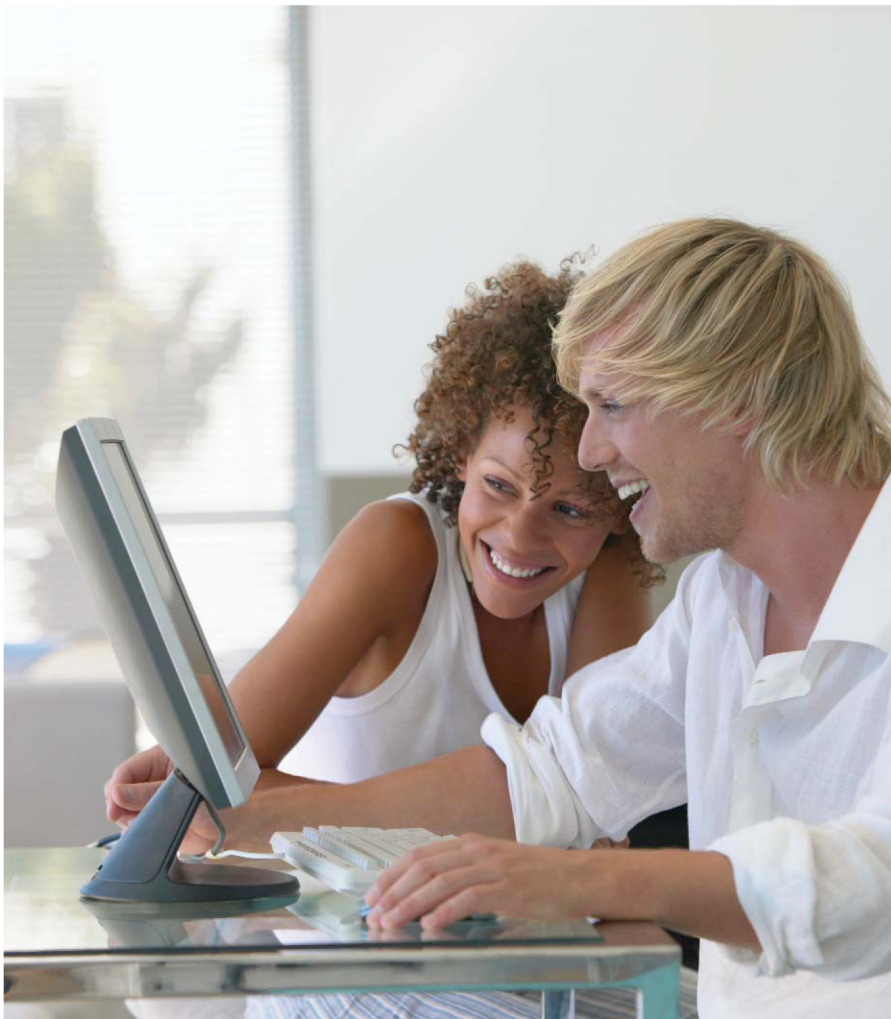
Controlled access

Ample outdoor and garage parking available

VIPdesk® concierge and 24-hour front desk

Rent payment with American Express®

Cats and large dogs welcome



It's everything a home should be. Comfort inside. Convenience outside. Here, you'll be surrounded by 36 acres of parks including Grace Murray Hopper Park, shaded picnic areas, numerous barbeques and a fitness trail with outdoor workout stations. Just a short walk from all the shopping, dining and entertainment you could ever want and just minutes from Reagan National Airport and the Metro, River House lets you have what you want, everywhere you want.

Located right in Pentagon City, River House is within walking distance of the Pentagon City and Crystal City Metros, VRE, the Crystal City Shops, the Pentagon and the incredible stores and restaurants of Fashion Centre and Pentagon Row. Minutes from I-395, Route 1, Crystal City and downtown DC, this is one address that puts you exactly where you want to be.



Just What You Need

Wall-to-wall windows

Breathtaking views of the city, Potomac River and national monuments

Choose between 35 floor plans from studios to three bedrooms

Remodeled kitchens and baths with new countertops, cabinetry and GE® appliances

Wired for cable and high-speed Internet

Numerous closets including expansive walk-ins

Separate dining rooms

Additional storage available



Everywhere You Want to Be

Steps from the Pentagon City Metro

Next to the Fashion Centre mall with its brand-name stores

Easy walk to Pentagon Row's Harris Teeter grocery store, restaurants and stores

Minutes from the Pentagon and Ft. Myer

Close to major employers of Crystal City

Moments from the Crystal City Shops and popular dining

Surrounded by local attractions including the soothing Crystal City Water Park

Quick access to the VRE

Near Mt. Vernon Bike Trail

Short drive or Metro ride from downtown DC

Situated near major roads including I-395 and Route 1

Around the corner from Reagan National Airport



Where to Start

From I-395, take Exit 8C toward Pentagon City/US-1/Crystal City/Reagan National Airport. Keep right at the fork to turn onto Army Navy Drive. Turn left on Joyce Street and continue to 1400 South Joyce Street on the right.



1400 South Joyce Street | Arlington, VA 22202

Tel: 703.521.7900 | Fax: 703.892.5652

www.RiverHouseApts.com