

BOZZUTO 

AT MAPLE LAWN

Bozzuto Story

At Bozzuto Homes, we've been building exceptional homes since 1988. And we take great pride in the communities we've helped to create.

Attention to detail and superior construction are hallmarks of the Bozzuto name. But our commitment to quality goes beyond the structure of a home. It's a commitment to the quality of life – to the actual experience of living in each of the homes we design and build.

Our mission is to create the best possible living environment. And to create communities that show respect for the world around them. You'll see this in everything from our efficiency as an ENERGY STAR Builder to the way our homes are designed to fit naturally into their environments.

And with our Home Buying Experience Program you'll find our commitment to your best experience starts well before you move in. Buying a new home has never been easier.

It's all part of how we became five-time Builder of Year, Multi-family Builder of the Year and three-time Environmental Builder of the Year.

It's all part of going beyond building houses to building homes and communities.





Spectacular Townhome-Style Condominiums

Bozzuto Homes at Maple Lawn brings new dimensions to the pursuit of care-free living. There's an ease and an elegance to these beautifully designed townhome-style condominiums that's unmatched in this much-sought-after, award-winning community.

Inherent in the design and construction is a low maintenance lifestyle. When you live at Bozzuto Homes at Maple Lawn you're rewarded with the time and freedom to enjoy all that this special community offers. You own your home without your home owning you.

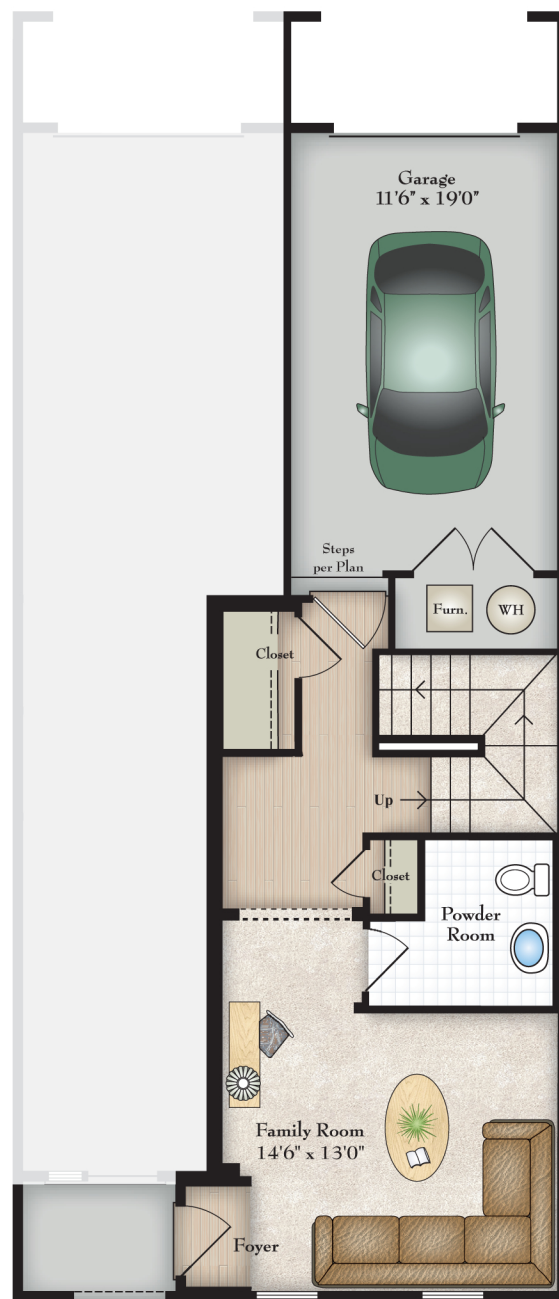
And you'll be located in the most desirable area of Howard County, providing easy access to Columbia, Baltimore and Washington, DC.

There's no better place for the highest quality of life. And now only Bozzuto Homes at Maple Lawn makes it oh-so-affordable while always reminding you that you are, truly, one of a lucky few.



The Red Maple

A creative, efficient layout that never compromises a feeling of openness.

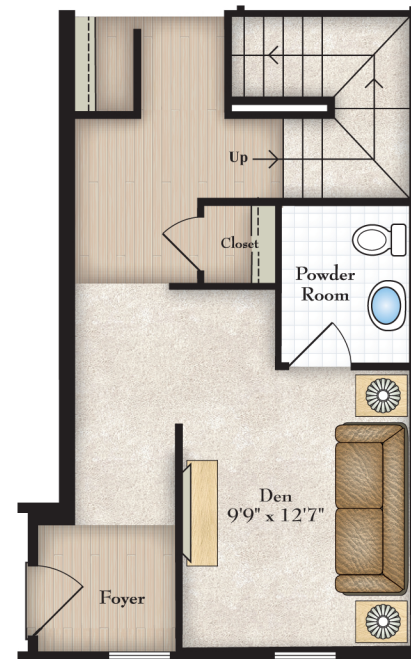


Box Bay Window per Plan



Bay Window per Plan

Note: See blueprints for additional window details.



Optional Den w/Powder Room



Optional Bedroom w/Full Bath

First Floor

Your own private, 1-car garage with tandem parking

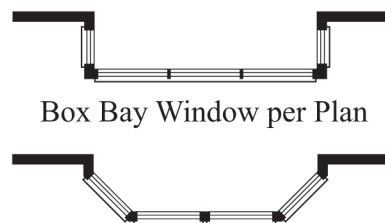
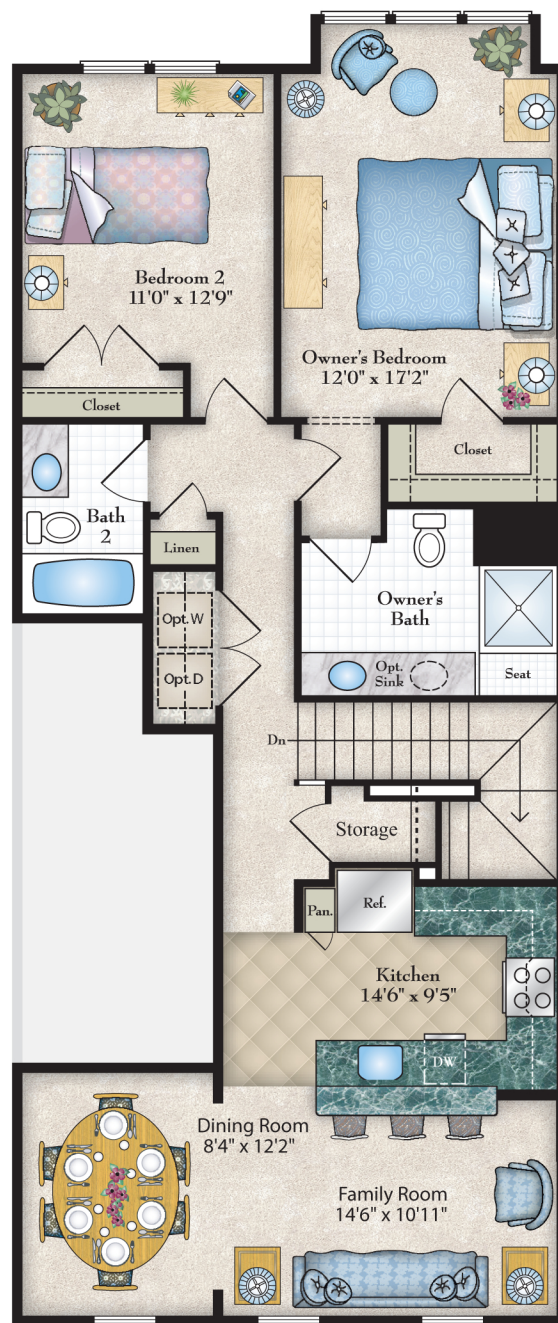
2-3 bedrooms available

Spacious family room

Powder room

Den or bedroom

Optional full bath



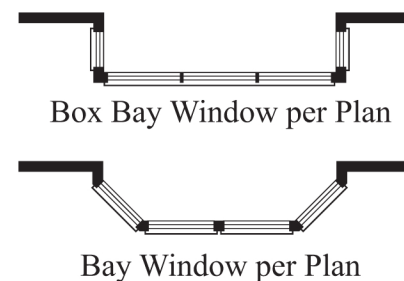
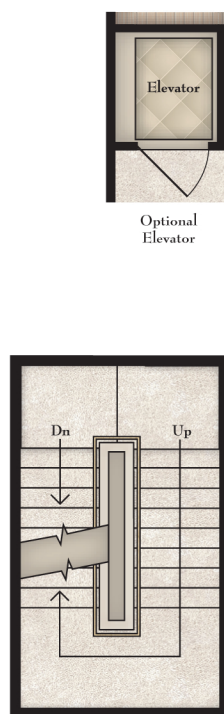
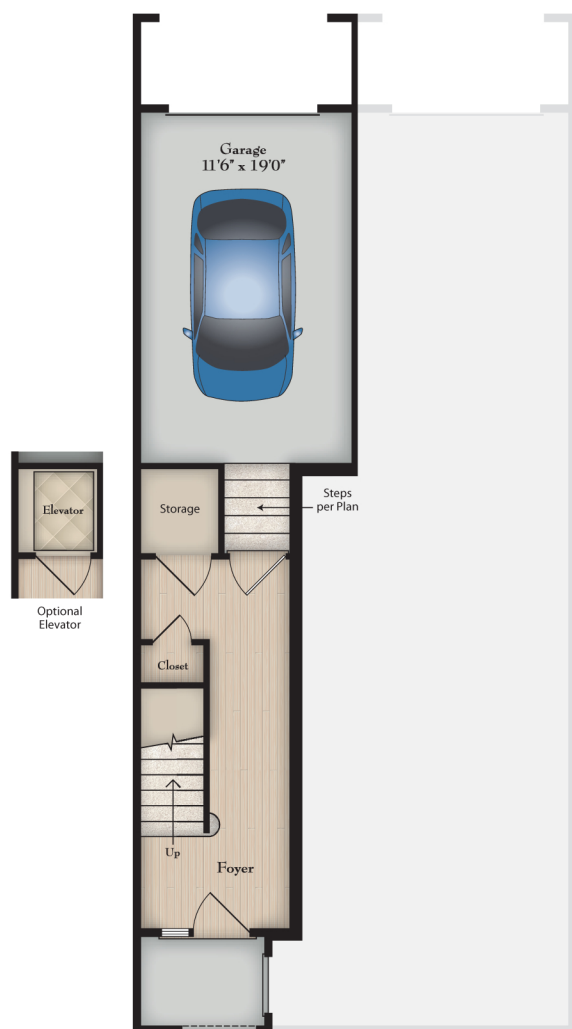
Note: See blueprints for additional window details.

Second Floor

- Open kitchen to living area
- Beautiful separate dining area
- Lovely owner's bedroom with private bath
- Walk-in closet in owner's bedroom
- Spacious second bedroom

The Silver Maple

A spacious, flexible floor plan provides all the space you need for any occasion or gathering.



Note: See blueprints for additional window details.

Third Floor

Your own private, 1-car garage with tandem parking

Optional private elevator into your home

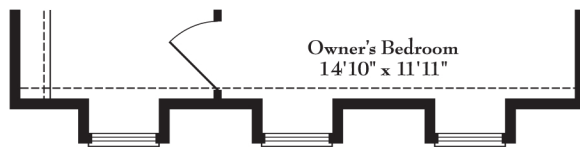
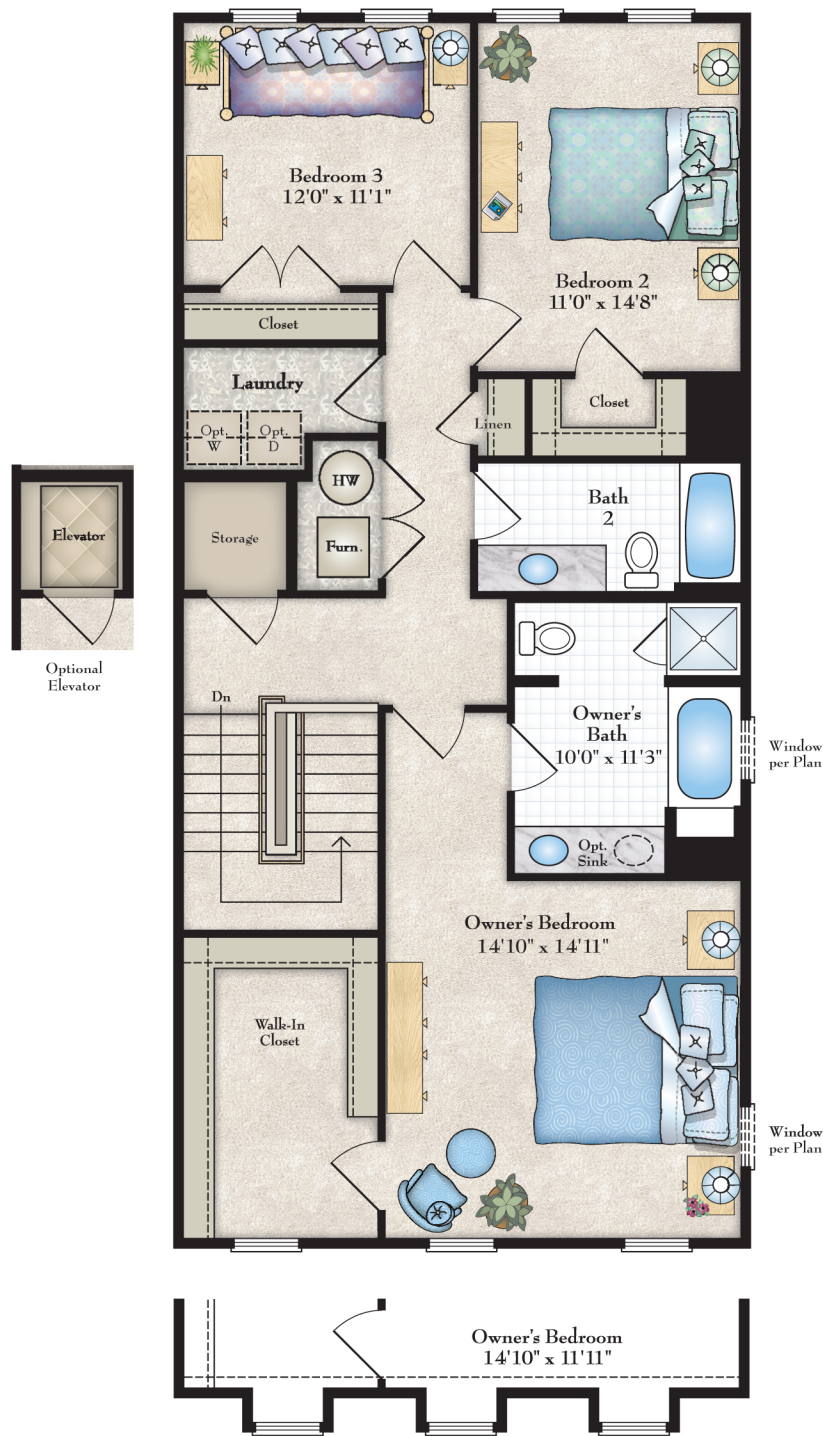
Open kitchen to spacious family room

Large balcony

Optional fireplace

Separate dining area

Space for a convenient study



Dormers per Plan

Note: See blueprints for additional window details.

Fourth Floor

- 3 spacious bedrooms and 2½ bathrooms
- Oversized walk-in closet in owner's suite
- Owner's bath with separate shower and tub
- Convenient laundry room

It's your home... it's your choice.

You've made the big decision. You've purchased one of our exceptional homes in Maple Lawn. Now, it's time to make it truly yours...with a visit to the Bozzuto Homes Design Studio. This is one of the first steps in our easy Home Buying Experience Program.

Be prepared to be immersed in a fascinating, forward-looking world of finishes, treatments and design choices. Whether you go item by item or room by room, you will make selections that reflect your individual taste and style.

You're encouraged to bring your design ideas, color preference and even photos of your favorite furnishings. And to maximize your home's potential, a Bozzuto Homes Design Coordinator will, with advice and guidance, masterfully execute your design desires.

For more information and to schedule an appointment, please talk to your Customer Relations Coordinator, who will be happy to arrange a meeting to fit your schedule.

Make your new home truly extraordinary.



Bozzuto at Maple Lawn

Site Plan



There are ample green spaces and pedestrian friendly pathways throughout Maple Lawn, as well as a huge variety of outdoor recreational facilities that will please those of all ages, including:

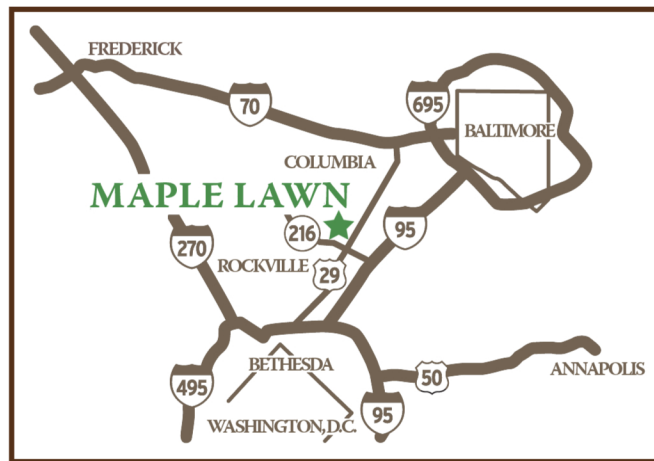
Nature trails • A stunning clubhouse hosts gatherings large and small
Fitness center • Large resort-style swimming pool • Children's pool
Tennis courts • Basketball courts • Multi-purpose courts
Cafes, grocery stores, boutiques, and restaurants are all just around the corner

It's all right here at Maple Lawn with Bozzuto Homes. We bring you home.

Maple Lawn Living



Living at Maple Lawn means that you do not have to get in your car and head out onto the highways to enjoy great meals and shopping. It's where you'll find your local cafés and delis, dry cleaners and tailors, card shops and book stores, all just a short walk away. With over 150,000 sq. ft of retail space, living at Maple Lawn means that you may never want to leave. Shop at Harris Teeter or IM Wine, dine at Venegas Prime Filet, Ranazul or Looney's Pub and enjoy the convenience of PNC Bank, BP Gas and Sidamo Coffee & Tea right in the neighborhood.



301.362.1068
BozzutoMapleLawn.com
11393 Iager Boulevard, Maple Lawn, MD 20759

Directions: From I-95, take exit 35B onto Route 216 West. At 3rd traffic circle, turn right onto Maple Lawn Boulevard. Follow Maple Lawn Boulevard less than 1 mile through two traffic circles to 2nd right at Iager Boulevard to the sales center on the left.

