



riverwalk
APARTMENT HOMES
AT MILLENNIUM



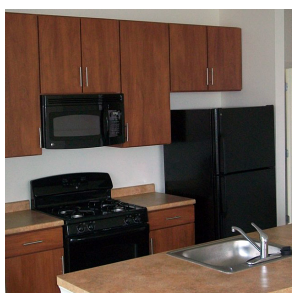
Premium apartments in Conshohocken.





Comfort. Community.

Located in a 60-acre community on the east bank of the Schuylkill River – one of Philadelphia’s most desirable locations – the elegant apartment homes of Riverwalk at Millennium represent a rare opportunity to have it all. Here you’ll find the perfect union of city style and ultimate comfort, in a selection of features, amenities and services that capture the very essence of who you are today. Because making a difference in our world is important to us, we are also proud to have an appealing selection of new residences available that are pending LEED® certification.



METROPOLITAN



CONTEMPORARY



ELITE

The future is bright in Conshohocken.

Whether you need to get to Center City, King of Prussia or Valley Forge, the apartments of Riverwalk at Millennium are convenient to major highways and within walking distance of SEPTA, making it the perfect home base for commuting professionals. Equally great: coming home to an energetic community designed for your active lifestyle, surrounded by the excellent eateries, friendly faces and small-town charm that mark Conshohocken.

FEATURES:

Multiple floor plans including two-story lofts | Choice of three finish levels: Metropolitan, Contemporary and Elite | Exceptional kitchens with GE® appliances and gas cooking | Stylish track lighting | Nine-foot ceilings and six-foot windows | French balconies, some with courtyard and river views | Walk-in and linen closets | Full-sized washers and dryers | High-speed Internet

AMENITIES:

Controlled-access entrances and parking | Dramatic clubhouse with fireplace | Billiards and pub room | Resort-style outdoor pool with sundeck | Health club-class fitness facility | Business center with conference facilities | Easy access to public transportation

GREEN LIVING*:

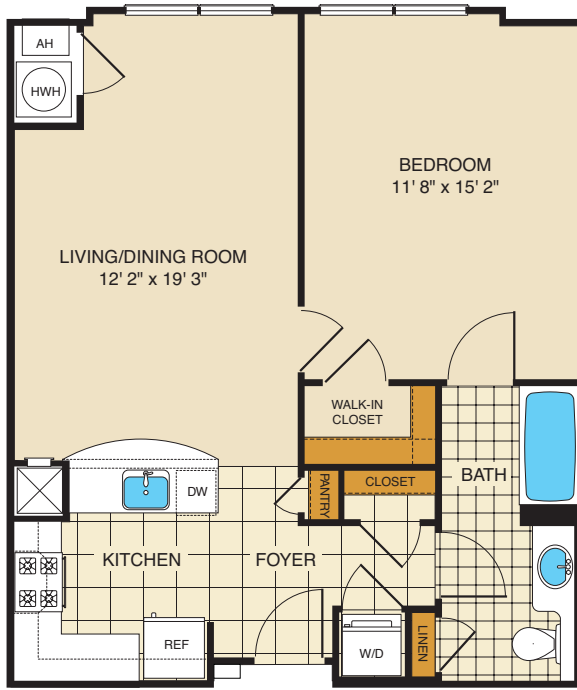
New residences pending LEED® certification available | Reflective roof shingles | ENERGY STAR® appliances | Low-E windows | High-efficiency HVAC units | Tankless hot water heaters | Green Label Plus carpet | Water-efficient landscaping | Low VOC adhesives and paints | Low flow plumbing fixtures | Increased building insulation | Bicycle storage and storage units

*Buildings 1000 and 4000 are pending LEED® certification.



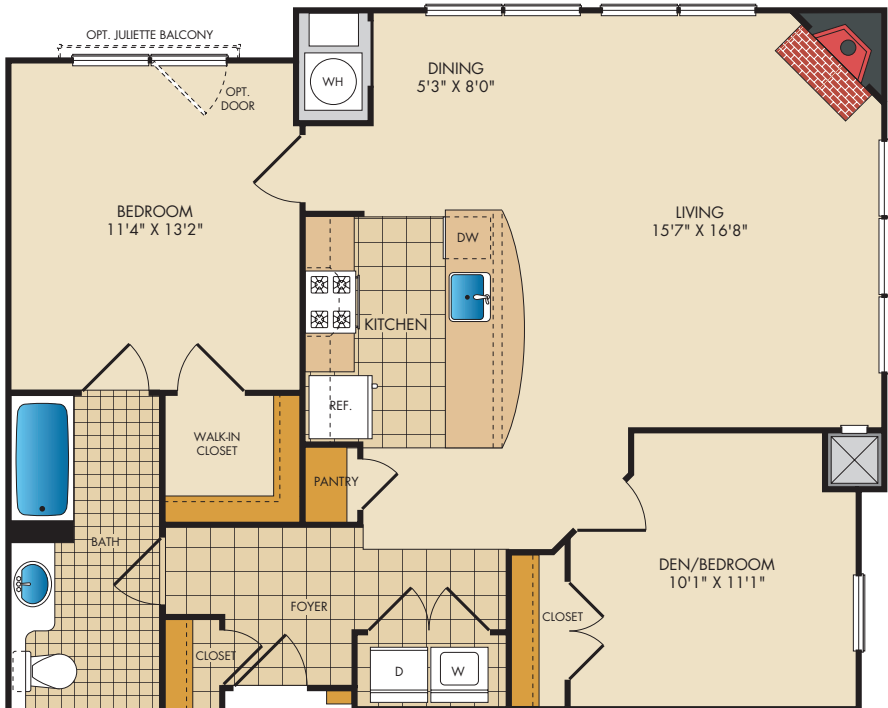
1 BEDROOM / 1 BATH | 716 sq. ft.

B5



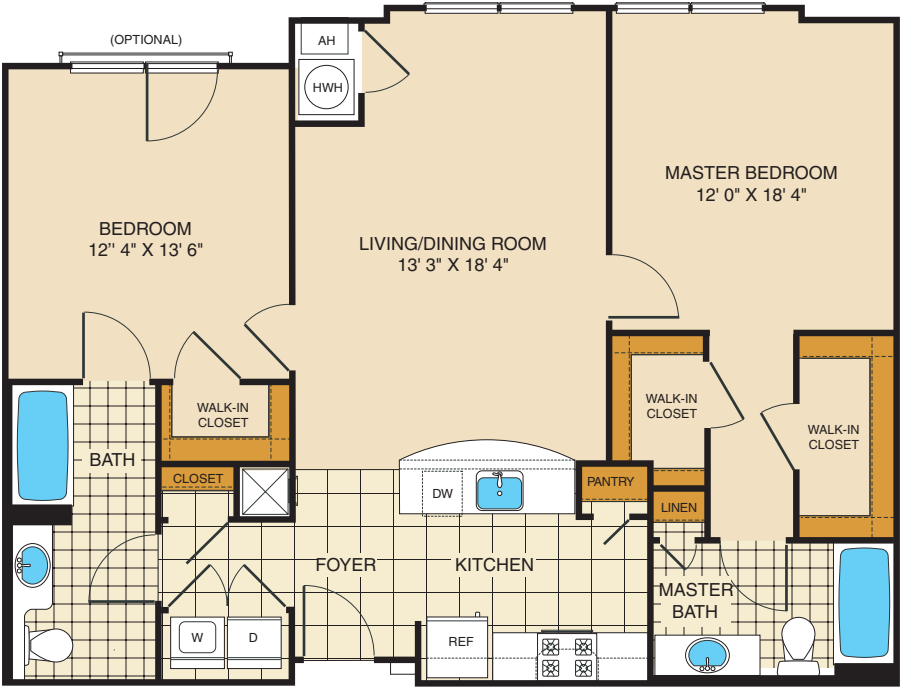
1 BEDROOM / 1 BATH / DEN | 986 sq. ft.

D5



2 BEDROOM / 2 BATH | 1,083 sq. ft.

F4



2 BEDROOM / 2 BATH / LOFT | 1,207 sq. ft.

H4

